

Alpha Driver Bits

simply superior



Among the millions of driver bits produced worldwide each year, only a small percentage reach the high quality standards of Alpha.

Alpha driver bits show less wear, have a longer service life, experience less cam-out and provide overall improved operational and economic benefits.



Fencing & Balustrade Hardware

Glass Clamps & Accesories	Q.2
Pool Fence & Balustrade Spigots	Q.3
Glass Diverse System	Q.4
Gate Hinges & Latches	Q.5
Stainless Steel Tubing	Q.8
Handrail Supports	Q.9
Post & Rail Caps	Q.11
Wire Rope	Q.12
Turnbuckles	Q.13
Rigging Screws & Fork Terminals	Q.14
Fork Terminals & Swage Terminals	Q.15
Wire Rope Accessories	Q.16
Balustrade Fittings	Q.17
Saddles / Pad Eyes	Q.18
Shackles / Eye Bolts	Q.19
Tools & Balustrade Installation Accessories	Q.20



Fencing & Balustrade Hardware

GLASS CLAMPS AND ACCESSORIES



GLASS CLAMP, "D" CLAMP MEDIUM

Features:

- Suits 6-10mm glass
- Order gasket to suit appropriate glass
- Clamps can support approx. 60-80kgs per 2 clamps vertically positioned
- H-45mm L-63mm W-26mm

Description	Finish	Code
Flat Base	Satin Stainless Steel	2-500-940
Flat Base	Polished Stainless Steel	2-500-942
2" Radius Base	Satin Stainless Steel	2-500-941
2" Radius Base, 6-10mm	Polished Stainless Steel	2-500-943

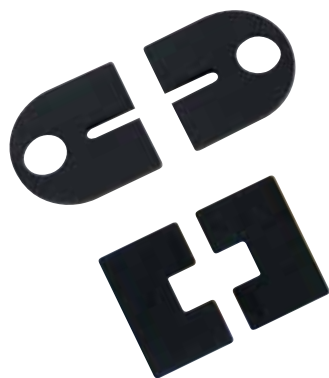


GLASS CLAMP, SQUARE LARGE

Features:

- Clamps can support approx. 60 - 80kgs per 2 clamps vertically positioned
- Order gaskets to suit appropriate glass
- Suits 8-12mm glass
- H-55mm L-55mm W-32mm

Description	Finish	Code
Flat Base	Satin Stainless Steel	2-500-960
Flat Base	Polished Stainless Steel	2-500-962



GLASS CLAMP GASKETS

- Sold as pairs

Description	Type	Code
Suits Medium Clamp 6mm Glass	"D"	2-500-944
Suits Medium Clamp 8mm Glass	"D"	2-500-945
Suits Medium Clamp 10mm Glass	"D"	2-500-946
Suits Large Clamp 8mm Glass	Square	2-500-964
Suits Large Clamp 10mm Glass	Square	2-500-965
Suits Large Clamp 12mm Glass	Square	2-500-966



BLIND RIVET NUT 304G SS & BUTTON HEAD CAP SCREW

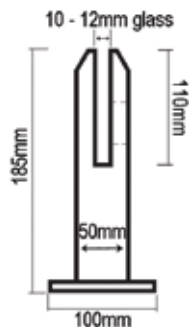
Features:

- Allows fittings to be joined to handrail
- AISI 304 stainless steel

Description	Type	Code
Large Flange	M8	2-500-935
Large Flange	M6	2-500-936
M8 x 20mm L Suit Glass Clamp		2-500-938

Fencing & Balustrade Hardware

POOL FENCE & BALUSTRADE SPIGOTS

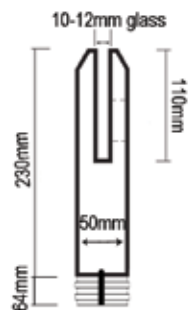


GLASS SPIGOTS

Features:

- No holes in glass required
- Minor adjustment, post installation
- Mirror polish, 316 stainless steel

Description	Size	Code
Base Plate Mount Spigot	185mm x 50mm	2-500-983

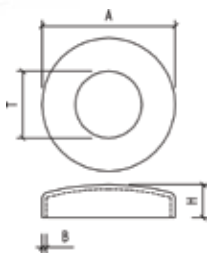


GLASS SPIGOTS

Features:

- No holes in glass required
- Minor adjustment, post installation
- Mirror polish, 316 stainless steel

Description	Size	Code
Core Drill Mount Spigot	230mm x 50mm	2-500-984



SPIGOT BASE COVER

Features:

- Mirror polish, 316 stainless steel

Description	A	T	H	B	Code
Post & Spigot Base Cover	102mm	51mm	26mm	0.8mm	2-500-989



TECHFLOW GROUT HES

Features:

- High performance, Class C rapid setting cementitious grout
- Ready to use, pre-mixed, requires only the addition of water
- Cementitious grouting where high early strength is required

Bostik

Description	Size	Code
Techflow Grout HES	20kg	2-144-062

Fencing & Balustrade Hardware

GLASS DIVERSE SYSTEM

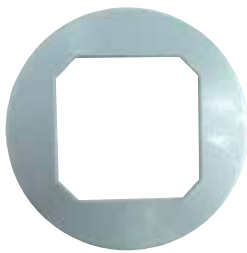


GLASS SPIGOT

Features:

- Diverse glass spigot
- Suitable for 12mm glass

Description	Finish	Code
Glass Spigot	Silver Powdercoated	2-500-970



DRESS RING

- Suits diverse glass spigot 2-500-970

Description	Finish	Code
Dress Ring	Silver Powdercoated	2-500-971



MOUNTING BRACKET

- Suitable for diverse system

Description	Finish	Code
Mounting Bracket	Silver Powdercoated	2-500-972



BASE PLATE

- Suitable for diverse system

Description	Finish	Code
Base Plate	Silver Powdercoated	2-500-973



2-500-974



2-500-975

MOUNTING SCREW AND BOLT

- Stainless steel

Description	Finish	Code
Mounting Bolt	Hex M16 x 100mm	2-500-974
Mounting Screw	Heavy Duty M16 x 50mm	2-500-975

Fencing & Balustrade Hardware

GATE HINGES AND LATCHES



POOL GATE HINGE

Features:

- Glass to glass hinge
- Stainless steel hinge
- Silver powdercoated

Description	Code
Pool Gate Hinge	3-136-029



POOL GATE LATCH - MAGNETIC

Features:

- Glass to glass latch
- Black plastic latch
- Silver powdercoated

Description	Code
Pool Gate Latch	3-136-027



3-136-411

3-136-427

MAGNA LATCH SERIES 2 TOP PULL/VERTICAL PULL



Features:

- Magnetically triggered latching
- Independently tested to meet pool barrier & safety codes
- Designed especially for swimming pool gates, but can be installed to any gate where child safety is paramount
- Adjusts horizontally and vertically

Description	Type	Length	Code
Magna Latch	MLTPS2BGA	520mm	3-136-411
Magna Latch	MLVPS2BGA	260mm	3-136-427



3-136-434



3-136-436

MAGNA LATCH SERIES 2 SIDE PULL



Features:

- Latch is magnetically triggered (no jamming or sticking)
- No visible fixings
- Quick & easy to install

Description	Type	Colour	Code
Magna Latch	MLSPS2	Black	3-136-434
Magna Latch Side Pull with Lock	MLSPS2L	Black	3-136-436

Fencing & Balustrade Hardware

GATE HINGES AND LATCHES



MAGNA LATCH GATE KITS

- Economical gate kits
- Key lockable latch
- Self closing hinges
- NATA tested

3-136-911

3-136-919

Description	Colour	Code
Gate Kit, Top Pull Magna Latch, 2 x Kwik, Fixed Tension Hinges (KFS)	Black	3-136-911
Gate Kit, Top Pull Magna Latch, 2 x Tru-Close Hinges (TCA1) & Hinge Cap	Black	3-136-919

GATE LATCH & LOCK - LOKKLATCH

Features:

- Adjusts vertically & horizontally
- Fits square profile gate materials
- Key-lockable convenience
- Won't rust or corrode
- LokkLatch Deluxe operates gates from both sides
- LokkLatch Deluxe, re-keyable, 6-pin security cylinders



3-136-723



3-136-792

Description	Type	Code
LokkLatch Standard Series 2	LLAA	3-136-723
LokkLatch Deluxe	LLDABS2-L	3-136-792

GATE HINGES AND LATCHES



3-136-130



3-136-131

SELF CLOSING HINGE - TRU CLOSE

Features:

- 3-way adjustment of vertical, horizontal and tension
- Weather resistant
- Suitable for metal installations - 3-136-130
- Suitable for timber installations - 3-136-131
- Self-closing



3-136-143

Description	Type	Gate Weight	Size	Code
Adjustable Tru-Close Hinge	TCA1S3BT	30kg	96mm x 76mm	3-136-130
Adjustable Tru-Close Hinge, With Legs	TCA1L2S3BT	30kg	96mm x 76mm	3-136-131
Adjustable Tru-Close Hinge, Heavy Duty	TCHD1AS3BT	70kg	125mm x 91mm	3-136-143



3-136-111



3-136-113

GATE HINGE - KWIKFIT

Features:

- Economical general-purpose, self-closing gate hinge
- Super-strong polymer construction and stainless steel components ensures no rust or corrosion
- Side legs for double-face fixing adds extra fixing strength

Description	Type	Gate Weight	Size	Code
KwikFit Gate Hinge, Plain, No Spring	KFP	20kg	110mm x 82mm	3-136-111
KwikFit Gate Hinge, Self Closing, Fixed Tension	KFS	20kg	110mm x 82mm	3-136-113

GATE STOP

Features:

- Helps keep the gate in alignment
- Protects against gate-slam damage
- Reduces unwanted gate-slam noise
- Suitable for aluminium; light weight gates



Description	Type	Size	Code
Gate Stop, Black	TCGS2	94mm x 62mm	3-136-146

Fencing & Balustrade Hardware

STAINLESS STEEL TUBING



ROUND TUBE

Features:

- 50.8mm diameter tube with 1.6mm wall thickness
- Modular system saves time and the need for specialised tooling; can be assembled using pop rivets, tek screws or knock-in only (self holding 'fins')
- Can be TIG welded or epoxy glued
- AISI 316
- High polished tube

Description	Length	Code
Round Tube	3.0m	2-500-648
Round Tube	6.0m	2-500-745



ROUND SINGLE SLOT TUBE

Features:

- 50.8mm diameter tube with 1.5mm wall thickness
- High polished tube
- AISI 316

Description	Length	Code
Single Slot Tube	6.0m	2-500-709



2-500-685



2-500-686

ROUND / OBLONG FLANGE

Features:

- AISI 316
- Suitable for fixing posts to flooring or handrails to walls or posts

Shape	Tube Ø	Code
Round	2"	2-500-685
Oblong	2"	2-500-686

WELDABLE ROUND BASE WITH COVER PLATE

Features:

- AISI 316
- Intermediate handrail posts



Description	Tube Ø	Code
Weldable Base Plate	2"	2-500-687

Fencing & Balustrade Hardware

HANDRAIL SUPPORTS

HANDRAIL SUPPORT "CURVED"



Features:

- AISI 316
- Three hole handrail support with 63mm diameter fixing base
- Curved top suits 2" handrail (flat top available)
- Screw fixing eliminates the need for welding

Description	Tube Ø	Code
Handrail Support	2"	2-500-644

INTERNAL 90° FITTED JOINER



Features:

- AISI 316
- Suitable for joining vertical posts to handrail

Description	Tube Ø	Wall Thickness	Code
Fitted Joiner	2"	1.6mm	2-500-690

INTERNAL & EXTERNAL ADJUSTABLE RAIL SUPPORT



2-500-680



2-500-681

Features:

- AISI 316
- Fully adjustable handrail support

Type	Tube Ø	Base Radius	Code
Internal Adjustable Rail Support	2"	2"	2-500-680
External Adjustable Rail Support	2"	2"	2-500-681

Fencing & Balustrade Hardware

HANDRAIL SUPPORTS



90° FLUSH JOINER

Features:

- AISI 316
- High polished finish

Description	Tube Ø	Wall Thickness	Code
Flush Joiner 90°	2"	1.6mm	2-500-670



FLUSH JOINER ADJUSTABLE

Features:

- AISI 316
- Flexible joiner used for stairway handrails or angled handrail
- Adjusts from 90° to 180°

Description	Tube Ø	Wall Thickness	Code
Flush Joiner Adjustable	2"	1.5mm	2-500-759



90° TEE FLUSH JOINER

Features:

- AISI 316
- High polished finish

Description	Tube Ø	Wall Thickness	Code
Flush Joiner 90° Tee	2"	1.6mm	2-500-674

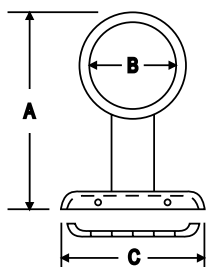


TEE FLUSH JOINER

Features:

- AISI 316
- High polished finish

Description	Tube Ø	Wall Thickness	Code
Flush Joiner Tee	2"	1.6mm	2-500-673



PARAPET RAIL SUPPORT "END SUPPORT"

Features:

- AISI 304
- Concealed base handrail end support
- Designed to be attached to a nub wall, vertical wall or floor

Description	A	B	C	Code
End Support	100mm	50.8mm	78mm	2-500-642

Fencing & Balustrade Hardware

POST & RAIL CAPS

DOME CAP



Features:

- AISI 316
- High polish

Description	Tube Ø	Wall Thickness	Code
Dome Cap	2"	1.6mm	2-500-660

FLAT CAP



Features:

- AISI 316
- High polish

Description	Tube Ø	Wall Thickness	Code
Flat Cap	2"	1.6mm	2-500-661

LIGHT KNOCK-IN END CAP



Features:

- AISI 316
- High polish

Description	Tube Ø	Wall Thickness	Code
Knock-In Cap	2"	1.6mm	2-500-662

SELF GRIP END CAP



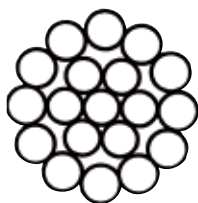
Features:

- AISI 316
- High polish

Description	Tube Ø	Wall Thickness	Code
End Grip Cap	2"	1.6mm	2-500-762

Fencing & Balustrade Hardware

WIRE ROPE

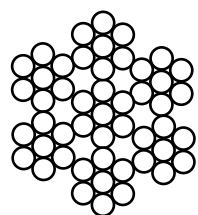


WIRE ROPE 1X19 CONSTRUCTION

Features:

- Limited flexibility and stretch, high tensile strength; suitable for standing rigging, mast stays and swage fittings where wire will not be subject to bending stresses
- Available in 305m reel
- AISI 316 (Marine Grade)
- Other wire diameters available on request

Wire Ø	Breaking Strain	Lengths	Code
3.2mm	710kg	Per Metre	2-500-700L
3.2mm	710kg	305m	2-500-700

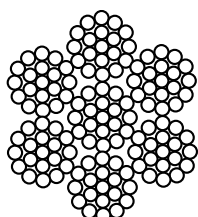


WIRE ROPE 7X7 CONSTRUCTION

Features:

- Common semi-flexible wire suited for balustrade and general rigging applications
- Can be used with swage fittings or wire rope ferrules
- Available in 305m reel
- AISI 316 (Marine Grade)
- Other wire diameters available on request

Wire Ø	Breaking Strain	Lengths	Code
3.2mm	710kg	Per Metre	2-500-701L
3.2mm	710kg	305m	2-500-701



WIRE ROPE 7X19 CONSTRUCTION

Features:

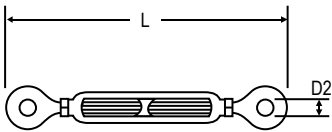
- Highly flexible wire, suitable for running rigging, control cables, cranes and winches
- Easiest wire to hand swage, also suitable for balustrade
- Available in 305m reel
- AISI 316 (Marine Grade)
- Other wire diameters available on request

Wire Ø	Breaking Strain	Lengths	Code
3.2mm	710kg	Per Metre	2-500-702L
3.2mm	710kg	305m	2-500-702

Fencing & Balustrade Hardware

TURNBUCKLES

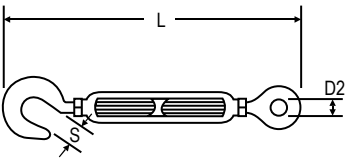
TURNBUCKLE EYE + EYE



Size	D2	L Min	L Max
M5	8mm	120mm	170mm
M6	10mm	150mm	220mm

Size	Description	Code
M5	Eye+Eye	2-500-205
M6	Eye+Eye	2-500-206

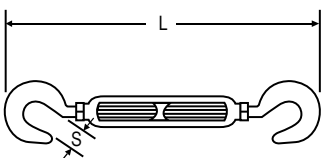
TURNBUCKLE EYE + HOOK



Size	D2	L Min	L Max	S
M5	8mm	120mm	170mm	9mm
M6	10mm	155mm	220mm	10mm

Size	Description	Code
M5	Eye+Hook	2-500-225
M6	Eye+Hook	2-500-226

TURNBUCKLE HOOK + HOOK



Size	L Min	L Max	S
M6	160mm	220mm	10mm

Size	Description	Code
M6	Hook+Hook	2-500-246

Fencing & Balustrade Hardware

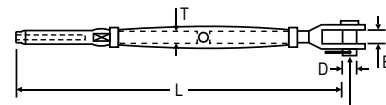
RIGGING SCREWS & FORK TERMINALS



RIGGING SCREW JAW + SWAGE W/LOCK NUTS

Features:

- AISI 316
- Suits Ø 3.2mm wire rope



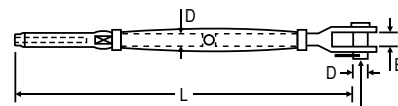
Size	B	D	L Min	L Max	Code
M5	6mm	5mm	153mm	193mm	2-500-115



RIGGING SCREW JAW + SWAGE W/LOCK NUTS MINI TYPE

Features:

- AISI 316
- Suits Ø 3.2mm wire rope



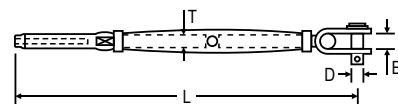
Size	B	D	L Min	L Max	Code
M5	6mm	5mm	109mm	149mm	2-500-118



RIGGING SCREW TOGGLE + SWAGE W/LOCK NUTS

Features:

- AISI 316
- Suits Ø 3.2mm wire rope

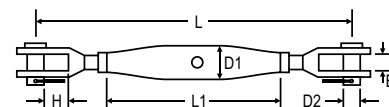


Size	B	D	L Min	L Max	Code
M6	8mm	6mm	142mm	215mm	2-500-119



RIGGING SCREW JAW + JAW W/LOCK NUTS

- AISI 316

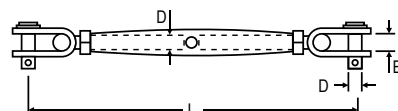


Size	B	D	L Min	L Max	H	Code
M5	7.5mm	5mm	125mm	185mm	11.5mm	2-500-105



RIGGING SCREW TOGGLE + TOGGLE W/LOCK NUTS

- AISI 316



Size	B	D	L Min	L Max	Code
M6	7.8mm	8mm	150mm	200mm	2-500-109

Fencing & Balustrade Hardware

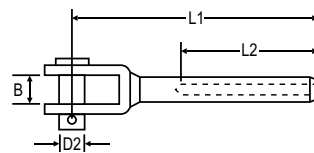
FORK TERMINALS & SWAGE TERMINALS



FORK TERMINAL SWAGE

Features:

- AISI 316
- Suits Ø 3.2mm wire rope
- For use with rigging screw jaw + swage



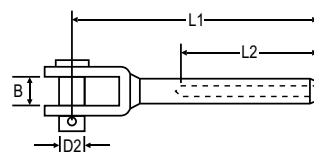
D2	L1	L2	B	Wire ø	Code
5mm	65mm	32mm	8mm	3.2mm	2-500-133



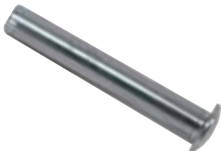
FORK TERMINAL SWAGE MINI TYPE

Features:

- AISI 316
- Suits Ø 3.2mm wire rope



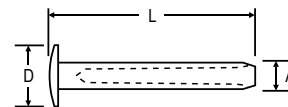
D2	L1	L2	B	Wire ø	Code
5mm	45mm	28mm	7mm	3.2mm	2-500-138



BUTTON DOME HEAD TERMINAL SWAGE

Features:

- AISI 316
- Suits Ø 3.2mm wire rope



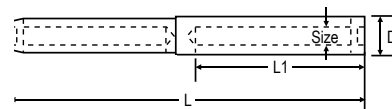
D	L	A	Code
10mm	48.5mm	6.35mm	2-500-160



INTERNAL THREADED TERMINAL SWAGE STUD

Features:

- AISI 316
- Suits Ø 3.2mm wire rope



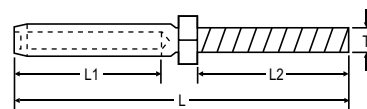
Size	D	L	L1	Code
M5	8mm	88mm	35mm	2-500-155



THREADED TERMINAL SWAGE STUD W/LOCK NUT

Features:

- AISI 316
- Suits Ø 3.2mm wire rope



T	L	L1	L2	Code
M5	91mm	40mm	40mm	2-500-145
M6	97mm	40mm	48mm	2-500-146

Fencing & Balustrade Hardware

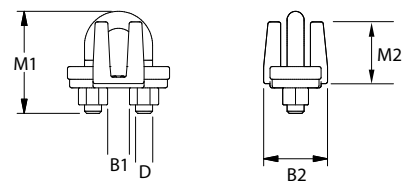
WIRE ROPE ACCESSORIES



WIRE ROPE GRIP

Features:

- AISI 316
- Suits Ø 3.2mm wire rope



B1	B2	D	M1	M2	Code
5.5mm	16mm	3mm	22mm	11mm	2-500-263

NICKEL PLATED COPPER FERRULE

Features:

- DIN 3093
- For use with hand & hydraulic swaging stainless steel wire rope
- Not suitable for galvanised wire rope swaging
- Recommended for use with 2-500-503 & 2-500-504

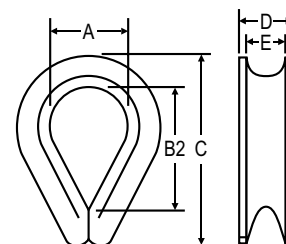


Finish	Size	Code
Nickel Plated Copper	3mm	2-500-453
Nickel Plated Copper	4mm	2-500-454

WIRE ROPE THIMBLE

Features:

- AISI 304
- Recommended for use with 2-500-453
- Suits Ø 3.2mm wire rope

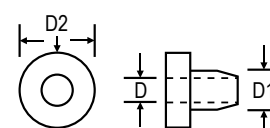


A	B2	C	D	E	Code
10mm	18mm	25mm	5.5mm	4.5mm	2-500-503
11mm	19mm	27mm	6.5mm	5mm	2-500-504

NYLON GROMMET

Features:

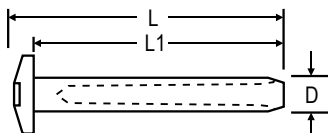
- Nylon bush for protecting wire from cutting on sharp objects, push-fit into posts
- Finish - Black
- Suits Ø 3.2mm to Ø 5.0mm wire rope



D	D1	D2	Code
6.2mm	9mm	12mm	2-500-610

Fencing & Balustrade Hardware

BALUSTRADE FITTINGS



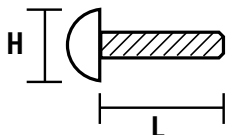
ALLEN KEY HEAD TENSIONER

Features:

- AISI 316
- Suitable for use with threaded terminals in either stairway or horizontal balustrade applications
- Internal thread

Thread	L	L1	D	Code
M6	40mm	35mm	8mm	2-500-600

BUTTON HEAD SOCKET SCREW

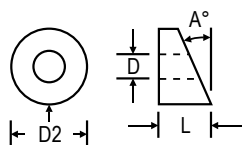


Features:

- AISI 304
- For use with internal threaded terminal range

Finish	Size	H	L	Code
S/Steel	M5	9mm	30mm	2-500-635
S/Steel	M6	10mm	40mm	2-500-636

BEVELLED WASHER



Features:

- AISI 316
- 35° angled washer for use with swage fittings and tensioners (stairway & balustrade)
- Stainless steel bevelled washer

D	D2	L	A	Code
8.2mm	13mm	11mm	35°	2-500-615

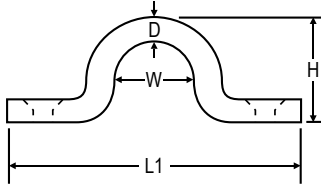
Fencing & Balustrade Hardware

SADDLES / PAD EYES



SADDLE (EYE STRAP)

- AISI 316

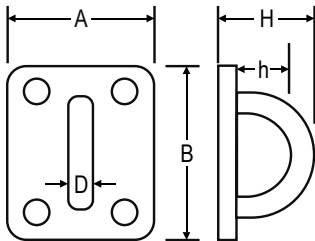


D	L1	H	W	Code
5mm	54mm	18mm	17mm	2-500-405
6mm	60mm	21mm	21mm	2-500-406



OBLONG PAD EYE

- AISI 304

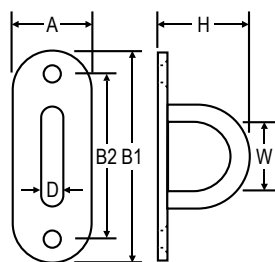


D	A	B	H	h	Code
8mm	40mm	50mm	33mm	20.6mm	2-500-481



OVAL PAD EYE

- AISI 304



D	A	B1	B2	H	W	Code
6mm	20mm	60mm	46mm	25mm	16mm	2-500-524

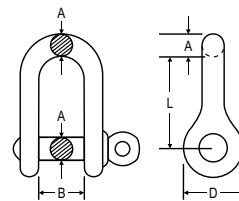
Fencing & Balustrade Hardware

SHACKLES / EYE BOLTS



STANDARD "D" SHACKLE

- AISI 316

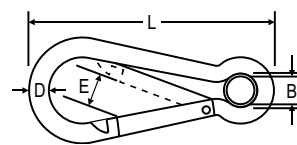


A	B	D	L	Code
4.8mm	11.3mm	9.7mm	22.4mm	2-500-305
5.8mm	12mm	11.7mm	23.9mm	2-500-306
7.8mm	17.5mm	15.6mm	32.6mm	2-500-308



SPRING HOOK W / EYELET

- AISI 316



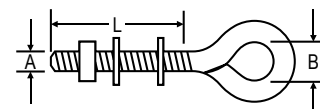
D	L	E	B	Code
6mm	60mm	9mm	7mm	2-500-561



EYE BOLT W / NUT & TWO WASHERS

Features:

- AISI 316
- Alternate sizes and lengths available on request

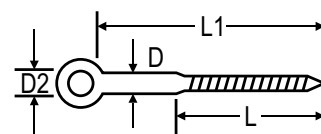


A	B	L	Code
M6	13mm	50mm	2-500-431
M8	17mm	75mm	2-500-433



LAG SCREW EYE

- AISI 316



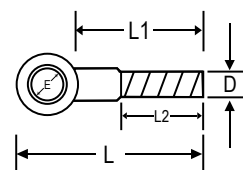
D	L1	L	D2	Code
6mm	60mm	40mm	6.3mm	2-500-471
8mm	60mm	39mm	8.4mm	2-500-472



EYE BOLT

Features:

- AISI 316
- M6 thread



D	L	L1	L2	E	Code
M6	24mm	14mm	10mm	6mm	2-500-476

Fencing & Balustrade Hardware

TOOLS & BALUSTRADE INSTALLATION ACCESSORIES



WIRE ROPE CUTTER

- Quality wire rope cutter suitable for cutting 0.6 - 4.0mm rope

Length	Cut Ø	Weight	Code
180mm	0.6 - 4.0mm	0.3kg	2-500-910



HAND SWAGER

- For swaging of wire rope ferrules only

Length	Wire Swage Ø	Code
600mm	1.0 / 1.5 / 2.0 / 2.5 / 3.2 / 4.0 / 5.0mm	2-500-922



PROFESSIONAL LUBE AND APPLICATOR

Features:

- Designed for heavy industrial use and where extreme climatic conditions prevail
- Contains no silicone, acid, petroleum distillate or kerosines
- Will not harm metal, plastics, paints, fibreglass, laminate or neoprene seals
- Quickly displaces water, will penetrate the severest of corrosion and protect

Description	Content	Code
Inox Lube	100g	3-701-501
Inox Lube	300g	3-701-503
Inox Lube & Applicator	5 litre	3-701-505
Inox Lube & Applicator	20 litre	3-701-521



LANOX MX4 SUPERIOR ANTI-CORROSION LANOLIN GREASE

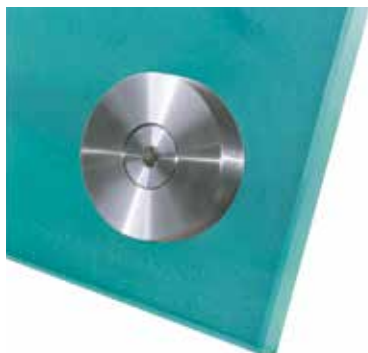
Features:

- Non-toxic, food grade approved lanolin grease
- Can be used as an anti-seize for bolts, nuts and threaded rod
- Prevents electrolysis between dissimilar metals
- Non-carcinogenic, bio-degradable, highly resistant to salt and acid corrosion and provides lasting protection

Description	Content	Code
Lanox MX4 Lanolin	300g	3-701-603
Lanox MX4 and Applicator	5 litres	3-701-605
Spray Applicator Only		3-701-521



PIN Systems by Connect



PIN System delivers a secure, elegant and clean alternative to your fixing requirements that can be incorporated into any design. The modular system has a variety of sizes and styles that makes the PIN System easy to specify and install to suit a diverse range of internal (303 stainless steel) or external (316 stainless steel) applications. PIN System can also be designed to suit individual projects.