



Invisible as if glued, versatile as if screwed



The Invis Mx2 from Lamello satisfies the highest demands for aesthetics, stability and productivity.

With no visible openings, Invis Mx2 can be quickly detached and reconnected at any time via the rotating magnetic field of the MiniMag Mx2 that drives the connector just as one cogwheel drives another.

With a powerful 250kg of clamping force in each connector the perfectly clamped joints require no extra screws or the need for clamps.

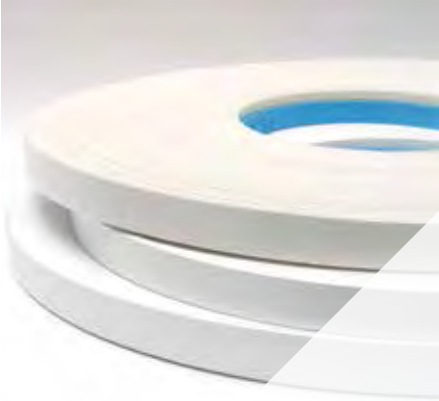
Once they're joined the job is done.



 swiss made

Edging, Repairs & Corrections

Edging Tape _____	T.2
Edge Cleaner _____	T.3
Melamine Wrap Fixing Rail _____	T.3
Novoryt	
Thermal-Plastic Repair Filler _____	T.4
Repair Sticks _____	T.4
Filler & Filler Accessories _____	T.5
Putty Repair _____	T.6
Touch Up Repair _____	T.7
Correction Accessories _____	T.8



Adhesives, Sealants & Fasteners



EDGING TAPE

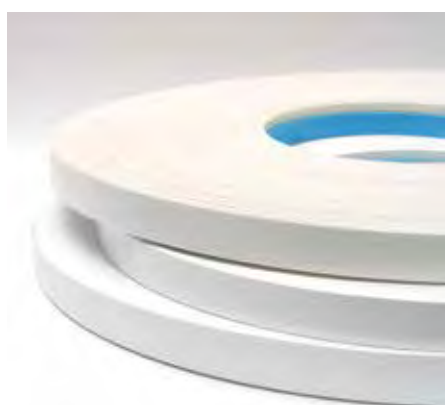


ABS EDGEBANDING TAPE

Features:

- Available in Preglued or Unglued rolls
- Durable and impact resistant

	Qty 100m Roll PREGLUED	Qty 200m Roll UNGLUED	Qty 100m Roll UNGLUED
Finish	21mm x 1mm	21mm x 1mm	22mm x 2mm
White Satin	1-178-100S	1-177-099S	1-170-100S
White Stipple	1-178-101S	1-177-100S	1-176-100S

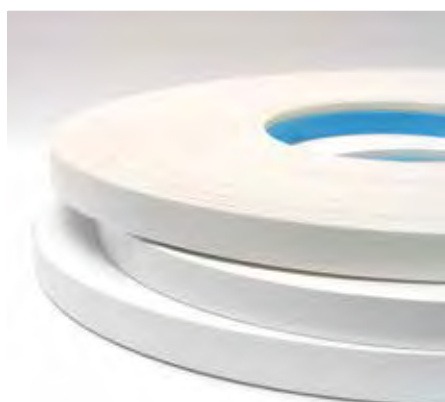


MELAMINE PAPER EDGEBANDING TAPE

Features:

- Width: 21mm x thickness: 0.4mm
- Available in Preglued or Unglued rolls
- Single-layer edgebanding with a surface finish

Finish	Qty 150m Roll PREGLUED	Qty 250m Roll UNGLUED
White Satin	1-180-700	
White Stipple	1-180-701	1-180-704



PVC EDGEBANDING TAPE

Features:

- Width: 21mm x thickness: 0.4mm
- Available in rolls of 250m

Finish	Qty 250m Roll UNGLUED
White Stipple	1-182-852

Lincoln Sentry are able to order and supply a full range of solid colours and timber veneer tapes in both Melamine and ABS materials. Please speak to your Territory Manager and they will assist you in placing your order.

Edging, Repairs & Corrections



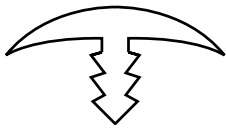
ABS EDGE CLEANER

SURTECO

Features:

- ABS edge cleaner
- Removes adhesive residue off ABS edging
- 20 Litres

Finish	Content	Code
ABS Cleaner	20 litres	1-170-096



T-MOULD

Features:

- Made of PVC
- Board size 18mm
- Sold by the length

Type	Colour	Width	Qty	Code
306 T-Mould	White	20mm	150m	1-185-780



MELAMINE WRAP FIXING RAIL

Dekorpine Melamine Wrap Fixing Rail

dekor**form**

Features:

- Australian made
- Substrate: finger joint radiata pine
- Straight and strong for good screw hole fixing
- Prefinished - requires no additional painting
- No cutting and edging required
- Sold as each or pack quantities
- Sold by the length

Finish	Length	Width	Height	Sold	Code
White Satin	3600mm	42mm	18mm	Each (15/pack)	1-206-538
White Satin	3600mm	68mm	18mm	Each (10/pack)	1-206-540

Edging, Repairs & Corrections

NOVORYT THERMAL - PLASTIC REPAIR FILLER



NOVORYT REPAIR 60 KIT

Features:

- Includes gas knife & canister
- 60 x repair stick colours

Description	Code
Novoryt Repair 60 Kit	2-149-090



NOVORYT REPAIR 40 KIT

Features:

- Includes gas knife & canister
- 40 x repair stick colours

Description	Code
Novoryt Repair 40 Kit	2-149-095



NOVORYT REPAIR 20 KIT

Features:

- Includes gas knife & canister
- 20 x repair stick colours

Description	Code
Novoryt Repair 20 Kit	2-149-099



NOVORYT REPAIR PARTS



Description	Code
Novoryt Repair Gas Knife	2-149-0992
Novoryt Gas Knife Tip	2-149-0995
Novoryt Gas Canister	2-149-100

NOVORYT REPAIR STICKS

- Individual repair sticks

Type	Colour Name	Code
Novoryt 164	Clear	2-149-164
Novoryt 219	White	2-149-219
Novoryt 240	New Antique White	2-149-240
Novoryt 209	Antique White	2-149-209
Novoryt 215	Flax	2-149-215
Novoryt 172	Marl Beige	2-149-172
Novoryt 171	Natural Beech	2-149-171
Novoryt 218	Best Tawa	2-149-218
Novoryt 111	Oak	2-149-111
Novoryt 169	Ash White	2-149-169
Novoryt 107	Birch	2-149-107
Novoryt 203	Opal Grey	2-149-203
Novoryt 205	Folkstone	2-149-205
Novoryt 216	Wilsonart Cloud	2-149-216
Novoryt 202	Twilight	2-149-202

Type	Colour Name	Code
Novoryt 231	Colonial Blue	2-149-231
Novoryt 207	Storm	2-149-207
Novoryt 238	Briar	2-149-238
Novoryt 208	Porcelain Rose	2-149-208
Novoryt 114	Birch / Light Cherry	2-149-114
Novoryt 213	Nullabor	2-149-213
Novoryt 122	American Walnut	2-149-122
Novoryt 115	Dark Cherry	2-149-115
Novoryt 123	Autumn Cherry	2-149-123
Novoryt 212	Reef	2-149-212
Novoryt 151	Blue	2-149-151
Novoryt 152	Red	2-149-152
Novoryt 153	Yellow	2-149-153
Novoryt 220	Black	2-149-220

THIS COLOUR CHART IS FOR REFERENCE ONLY.
LINCOLN SENTRY RECOMMENDS COLOUR MATCHING BEFORE PRODUCT IS USED.

Edging, Repairs & Corrections

WOODFILLER

Timbermate Woodfiller



Features:

- A water-based 4 in 1 filler. Timbermate is a crackfiller, edgfiller, grainfiller and woodputty all in one
- Will not crack, shrink, sink or fall out
- When watered down can be used as a sanding sealer
- Non flammable / non toxic
- 100% Australian made and owned
- Fast drying (approx. 20-30 minutes), can be heat dried with a heat gun or lamp
- Stainable, before or after application

Applications:

- Fills cracks in all types of timber, masonry, plaster, flooring, drywall, brick, concrete, fibreglass, plastic or metal
- Can be mixed with wood glues
- Recommended for interior use only
- Clean hands or tools with water after use



Timbermate Colour	Content	Code	Timbermate Colour	Content	Code
Tasmanian Oak	250g	2-147-411	Pine	500g	2-147-472
Tasmanian Oak	500g	2-147-415	Pine	2kg	2-147-473
Jarrah	500g	2-147-422	Cedar Blackwood	250g	2-147-481
Mahogany	250g	2-147-431	Cedar Blackwood	500g	2-147-482
Mahogany	500g	2-147-432	Teak	250g	2-147-491
Maple	250g	2-147-441	Teak	500g	2-147-492
Maple	500g	2-147-442	Walnut	250g	2-147-501
Oak	250g	2-147-461	Walnut	500g	2-147-502
Oak	500g	2-147-462	White	250g	2-147-511
Pine	250g	2-147-471	White	500g	2-147-512

WAX STICK

FASTCAP SoftWax Stick Kit



Features:

- 20 colours available in kit (blend colours to match just about anything)
- Hard-shell case to keep your wax organised and clean
- Includes WaxWedge and buffing pad

Type	Colour	Code
FASTCAP SoftWax Filler Kit	20 Colours	2-149-060

Type	Colour	Code	Type	Colour	Code
SoftWax Stick 1S	White	2-149-067	SoftWax Stick 11S	Medium Brown	2-149-077
SoftWax Stick 2S	Beige	2-149-068	SoftWax Stick 12S	Dark Brown	2-149-078
SoftWax Stick 3S	Tawa	2-149-069	SoftWax Stick 13S	Mahogany	2-149-079
SoftWax Stick 4S	Riversand	2-149-070	SoftWax Stick 14S	Walnut	2-149-080
SoftWax Stick 5S	Caramel	2-149-071	SoftWax Stick 15S	Rosewood	2-149-081
SoftWax Stick 6S	Pottery	2-149-072	SoftWax Stick 16S	Cedar	2-149-082
SoftWax Stick 7S	Oak	2-149-073	SoftWax Stick 18S	Terracotta	2-149-084
SoftWax Stick 8S	Coffee	2-149-074	SoftWax Stick 19S	Burgundy	2-149-085
SoftWax Stick 9S	Light Brown	2-149-075	SoftWax Stick 20S	Black	2-149-086
SoftWax Stick 10S	Teak	2-149-076			

Edging, Repairs & Corrections



GLAZING PUTTY - WOOD GRADE

Conway Linseed Oil Putty

Features:

- Suitable for glazing, joinery, general plumbing and painting repairs
- Suitable for back-bedding and glazing timber framed windows, door panels etc.
- Sold as individual tubs

Type	Colour	Content	Code
Conway	White	400g	2-164-680
Conway	White	1.75kg	2-164-690
Conway	White	5kg	2-164-682
Conway	White	10kg	2-164-683
Conway	White	20kg	2-164-685
Conway (Steel Frame)	Grey	10kg	2-164-684
Conway (Steel Frame)	Grey	20kg	2-164-689
Conway	Cedar / Light Brown	20kg	2-164-688



GLAZING PUTTY - WOOD GRADE

Selley's Linseed Oil Putty



Features:

- Superior grade wood sash putty
- Suitable for back-bedding and glazing timber framed windows, door panels etc.

Type	Colour	Content	Code
Selley's	White	450g	2-164-667
Selley's	White	2kg	2-164-668



GLAZING PUTTY - WOOD GRADE

Robertson's Linseed Oil Putty

Features:

- Suitable for glazing, joinery, general plumbing and painting repairs
- Suitable for back-bedding and glazing timber framed windows, door panels etc.

Type	Colour	Content	Code
Robertson's	White	20kg	2-164-677
Robertson's	Light Brown	20kg	2-164-678



PLASTIC PUTTY REPAIR

Selley's Plastic Bond Putty



Features:

- Multi-purpose plastic putty that can be used for building or repair work where filling, bonding or moulding is necessary
- Sets in 20 mins after hardener mixed in

Description	Content	Code
Plasti-Bond (Heavy Duty)	1.6kg	1-130-516
Tradie's Bog	550g	1-130-507
Tradie's Bog	900g	1-130-508

Edging, Repairs & Corrections



FURNITURE REPAIR CRAYON



Features:

- To fill in and re-colour scratch or cut damages in furniture
- Sold as a box quantity

Colour	Box Qty	Code	Colour	Box Qty	Code
Black	12	2-147-245	Folkstone Grey	12	2-147-252
Antique White	12	2-147-247	Walnut	12	2-147-253
White	12	2-147-250	Oak	12	2-147-254
Marl Beige	12	2-147-251			



TOUCH UP PAINTS



- 150g aerosol can

Description	Code	Description	Code
Anodic Bronze	3-700-710	Jasper	3-700-806
Anotec Dark Grey	3-700-713	Paperbark	3-700-807
Apo Grey	3-700-715	Pale Eucalypt	3-700-810
Anotec XT Silver Grey	3-700-717	Deep Ocean	3-700-812
Dune	3-700-725	Night Sky	3-700-813
Blue Ridge	3-700-728	Notre Dame	3-700-815
Black Gloss	3-700-730	Surf Mist	3-700-820
Black Satin	3-700-735	Pottery	3-700-835
Matt Black	3-700-738	Precious Silver Pearl	3-700-840
Light Bronze	3-700-740	Primrose	3-700-845
Medium Bronze	3-700-745	Sandbank	3-700-847
Bushland/ Teatree	3-700-748	Shale Grey	3-700-849
Charcoal	3-700-750	Wilderness	3-700-852
Clear Anodised	3-700-760	Woodland Grey	3-700-860
Doeskin	3-700-765	Monument	3-700-862
Cottage Green	3-700-770	Evening Haze	3-700-864
Hammersley Brown	3-700-780	Loft	3-700-866
Headland	3-700-783	Classic Cream	3-700-868
Hawthorn Green	3-700-790	Stone Beige	3-700-870
Heritage Green	3-700-792	Transformer Grey	3-700-878
Manor Red	3-700-795	Pearl White	3-700-890
Almond Ivory	3-700-802	Satin White	3-700-892
Ironstone	3-700-804	White Birch	3-700-895
Magnolia	3-700-805	Windspray	3-700-897



ETCH PRIMER



Features:

- 300g aerosol can
- Suitable for steel, aluminium, chrome, zincalume, galvanised iron, copper, brass, stainless steel, & other metal alloys

Description	Code
Etch Primer	3-700-301

Edging, Repairs & Corrections



LIQUID LAMINATE

Features:

- For the repair of small chips and imperfections in melamine board and laminate
- Water based acrylic, thin and easily cleaned with water
- Colour darkens when dry, mix one shade lighter when mixing paints
- 15ml bottle

Colour	Code	Colour	Code
Alabaster	2-149-000	Marl Beige	2-149-025
Almond	2-149-005	Moonstone	2-149-030
Black	2-149-007	New Antique White	2-149-035
Classic Beige	2-149-010	Sage	2-149-045
Pewter Grey	2-149-015	Silver Grey	2-149-050
Folkstone/Oyster Grey	2-149-020	White	2-149-055



DAB STICKS

Features:

- 14ml bottle
- Repairs small chips

Description	Code
Black Satin	3-700-535
Ivory Coast	3-700-602
Primrose	3-700-645
Pearl White	3-700-690
White Birch	3-700-695



RUBBING BLOCK

Sandflex Aluminium Rubbing Block

Features:

- Can be used with water, soap, paraffin and other fluids or pastes for improved effect
- Use on iron, steel, metals, paintwork, varnish, wood, leather, paper, ceramics, porcelain, plastics and rubber

Description	Grade	Code
Sandflex	Fine	2-408-555



ADHESIVE PACK

Combination Adhesive Pack

Features:

- Hides unsightly chips, scratches & saw cut marks in melamine around pipes and drains
- Items are also available as individual items

Description	Code
Combination Pack	1-482-155
40mm Waste Access Cover Plate	1-482-150
50mm Waste Access Cover Plate	1-482-151
65mm Waste Access Cover Plate	1-482-152
Blank Flange BF60	1-482-153
Wall Outlet Flange	1-482-154
Blank Sheet BS300	1-482-158
Copper Pipe Flange	1-482-159



Selleys Plasti-Bond

Send in the heavies



Selleys Plasti-Bond is a multi-purpose plastic putty that can be used for building or repair work where filling, bonding or moulding is necessary. It sets in 20 minutes without shrinkage, after the hardener is mixed in.

Once it has hardened it can be sawn, drilled, tapped, sanded and painted and can be coloured with cement oxides or paint tinters (before adding hardener).

Selleys Plasti-Bond is perfect for use on wood, plaster, brick, metal, alloys, ceramics, fibre cement, glass and tiles. Also available is Selley's Tradie's BOG.

SELLEYS®
IF IT'S SELLEYS IT WORKS™

Cabinet Hardware Catalogue Amendments



T - EDGING, REPAIRS & CORRECTIONS

AS OF 01 JULY 2014

Page	Code	Description of Issue	Action	New Code or Change	Amendment Date
T.7	3-700-882 3-700-888	Obsolete items	Codes removed		01 July 2014